

# Road Safety Education Webinar starting soon

Give them the resources to go places. Safely.



# Welcome to the Road Safety Education webinar

## Housekeeping

- Camera off
- Microphone off
- Q&A – put any questions into this section and we will try to answer any questions at the end of the session

# Opening Karakia

*Tutawa mai I runga*

*Tutawa mai I raro*

*Tutawa mai i roto*

*Tutawa mai i waho*

*Kia tau ai*

*Te mauri tū, te mauri ora*

*Ki te katoa*

*Haumi ē, hui ē, tāiki ē*

*Come forth from above, below, within and from the environment  
Vitality and well being, for all strengthening in unity.*



# Introduction

## About me

- Primary teacher for 15 years taught from NE to year 6
- Manage the Education Portal

## Role of the educator


- Role model
- Expose the students to road and rail safety

## Best practice

- Sufficient opportunities to learn - little but often
- Build on their prior knowledge
- Relate education to what's happening in their lives  
e.g scooters, bikes, crossing the road carefully


## Newsletter

Sign up to our newsletter to keep up to date with the latest news and road safety resources



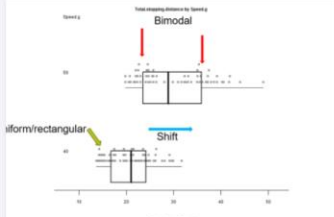
**WORKSHEETS OUT NOW**

Road safety. Years 1-2, 3-4, 5-6, 7-8 and 9-10.  
English and te reo Māori.




**SIGN UP TO NEWSLETTER**

Email newsletter once a term for teachers and road safety education professionals.



**RAIL SAFETY SONG**



**SAFE SPEEDS AROUND**

**Latest news**

[Get ready for Road Safety Week 2024 at your school](#)  
2 Apr 2024

[Secondary students visit schools with road safety message](#)  
26 Feb 2024

[Making the new rail safety song](#)  
4 Aug 2023

[More updates →](#)

# Rail safety resources

Home › Teacher resources › Primary curriculum resources ›

## Rail safety



Curriculum resources for New Zealand students learning to learn about safety near railways, especially the electrified rail networks in Auckland and Wellington.

Updated 2023

# Rail safety education plan

## English

How can I write an opinion (or argument) to make a difference to the safety of citizens using the rail network?

[Rail safety English \[DOCX, 231 KB\]](#)

## Mathematics

What measurements, shapes, positions or orientations will help keep citizens safe on the electrified rail network?

[Rail safety mathematics \[DOCX, 206 KB\]](#)

## Science

What action would best keep citizens safe around the electrical energy used to move trains on the electrified rail network?

[Rail safety science \[DOCX, 341 KB\]](#)

## Social sciences

How can we take action to keep citizens safe when they interact with places on the electrified rail network?

[Rail safety social sciences \[DOCX, 193 KB\]](#)

# Virtual rail trips

[Home](#) > [Teacher resources](#) >

## Virtual trips



Virtual field trips enable school students to learn about our transport system by actively participating in an online learning experience.

The virtual trips are run by professional educators in CORE Education's LEARNZ team. All New Zealand schools have free access.

Each field trip includes videos, student reading resources and interactive activities.

### Digital innovation: Transforming rail safety →

Term 3 2022: this virtual field trip shows how people running our rail network use virtual reality and other tech to enhance safety.

### TranzAlpine: a STEM-learning journey with a view →

Term 3 2021. Virtual travel on the TranzAlpine train journey with LEARNZ, from Ōtautahi Christchurch to Māwhera Greymouth. Learn about engineering and rail safety.

### Rail Safety 2020 virtual field trip →

Term 3 saw LEARNZ teacher Andrew Penny lead a virtual field trip to Auckland for students to explore safety and sustainability with New Zealand's rail network.

### Rail safety 2019 – more sustainable journeys in Aotearoa New Zealand →

Take a virtual ride in New Zealand's trains, meet professionals working in our expanding rail industry and investigate rail safety.



# Rail safety education plan

## Discover more about TranzAlpine and trains

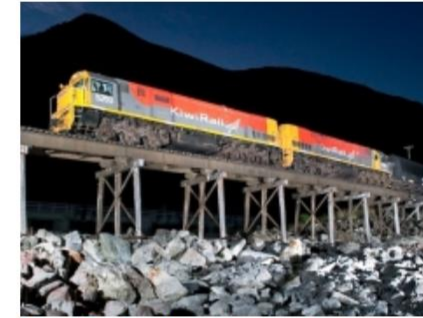
<- Homepage: *TranzAlpine: A STEM-learning journey with a view field trip*



Tracks, trains, locomotives



Trains in New Zealand



New Zealand's rail network



TranzAlpine



Safety around trains



# Stop Look Listen and Think – the Rail Safety song



# Rail safety posters



education.nzta.govt.nz

# Rail safety presentation and activities

## Rail safety

Keeping safe around trains  
and railway tracks

Education resource for  
Years 5-10



## Rail safety rules

What do we need to do to  
keep ourselves safe when  
crossing railway tracks?



Te Kāwanatanga o  
New Zealand Government



Always look up and down the track to check for trains.



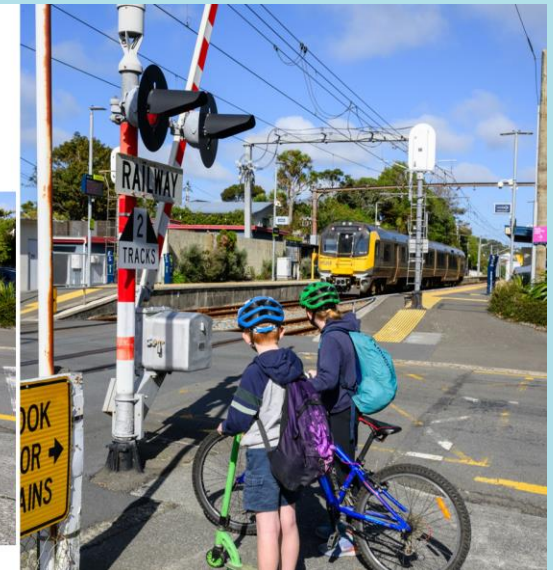
Always take off your headphones and make sure you're not being distracted by your phone, before crossing the track.



If the station has automatic gates, only cross when they have opened and there is no train in sight.



Get off your bike or scooter when waiting for a train to pass. Walk your bike across the tracks.

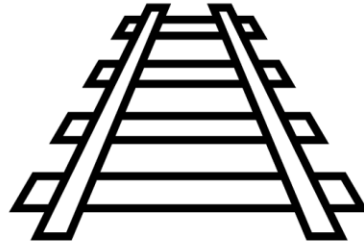




## Activity 2 Train facts

### Train facts - questions

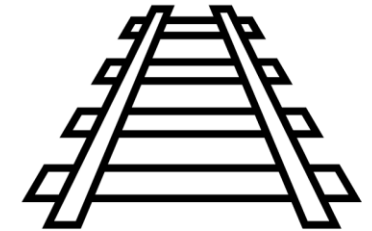
- 1. How much does an average passenger train weigh?
- 2. How heavy can a fully loaded freight train be?
- 3. How far would a fully loaded freight train travel when it is trying to stop?
- 4. How many metres can electricity jump?
- 5. What is the top speed for a train in NZ?
- 6. When is the right time to cross a level crossing after a train has gone?



## Activity 3 Wordsearch

### Rail Safety Week

T	C	P	N	A	U	R	E	D	T	X	O	T	O	E
X	H	F	H	L	Z	C	I	O	C	R	H	L	W	S
B	E	N	Z	R	I	R	D	Z	O	G	A	T	V	E
C	C	P	T	Y	E	R	Y	H	I	U	Y	I	W	N
R	K	M	S	C	P	Y	O	E	H	T	D	C	N	O
S	A	P	T	M	R	K	R	Q	U	O	Q	O	B	H
Q	X	I	X	K	R	F	N	E	T	S	I	L	S	P
A	O	Y	L	K	J	S	F	Z	I	Q	B	D	N	D
N	D	Z	O	W	H	U	R	J	A	E	U	O	R	A
B	N	B	C	Z	A	G	B	E	W	V	I	J	K	E
S	A	F	E	T	Y	Y	X	N	I	T	P	M	Q	H
Y	H	O	Q	U	H	D	N	Y	A	R	J	O	L	H
B	T	I	X	X	C	G	E	T	N	A	R	O	T	H
F	W	D	A	I	C	Y	S	K	U	C	O	A	D	S
P	A	S	S	E	N	G	E	R	J	K	P	R	B	E



### Find the word in the puzzle

Words can go in any direction.

Words can share letters as they cross over each other.

barriers

freight

look

safety

track

check

headphones

passenger

station

train

direction

listen

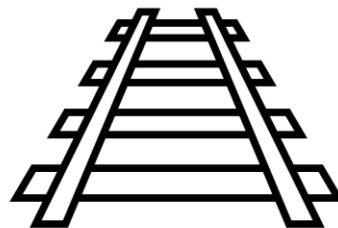
railway

stop

wait

## Activity 7 Poster

- Design a poster focused on a rail safety rule
- Think about placement of pictures and words
- Simple and clear is often best.



# New resource

- Interactive graphic novel
- Target audience Years 7-8 (intermediate years)
- Gives students the opportunity to make the right choice
- Will send out a link to newsletter subscribers before Rail Safety Week
- Will be making a similar resource for a slightly younger age group next year.







[Fast Tracks, Smart Moves | Rise 360](#)

**Megan Drayton**

**Foundation Manager at TrackSAFE  
Foundation NZ to talk about Rail  
Safety Week  
11 – 17 August 2025**



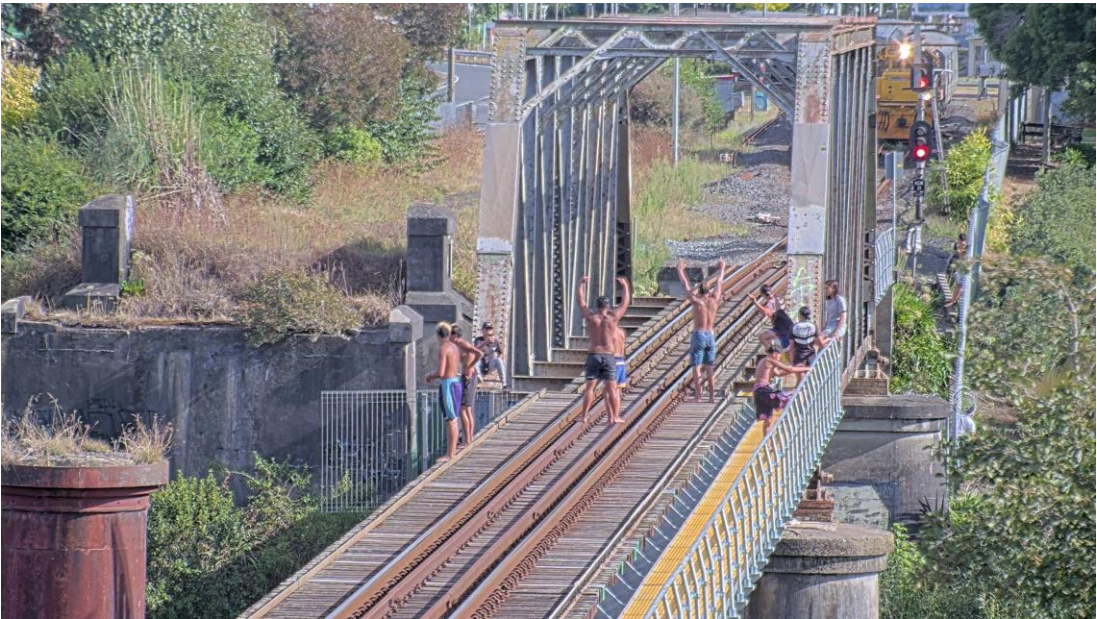
[education.nzta.govt.nz](https://education.nzta.govt.nz)

# TrackSAFE Foundation

Working together  
to save lives.









## Shortcuts/distraction/trespass

# Young girl killed in train accident in Matamata had just started high school



Poppy Clark

March 13, 2025 • 2:53pm

Share



## 'Vibing along': Mum's tribute to teen fatally struck by train while listening to music

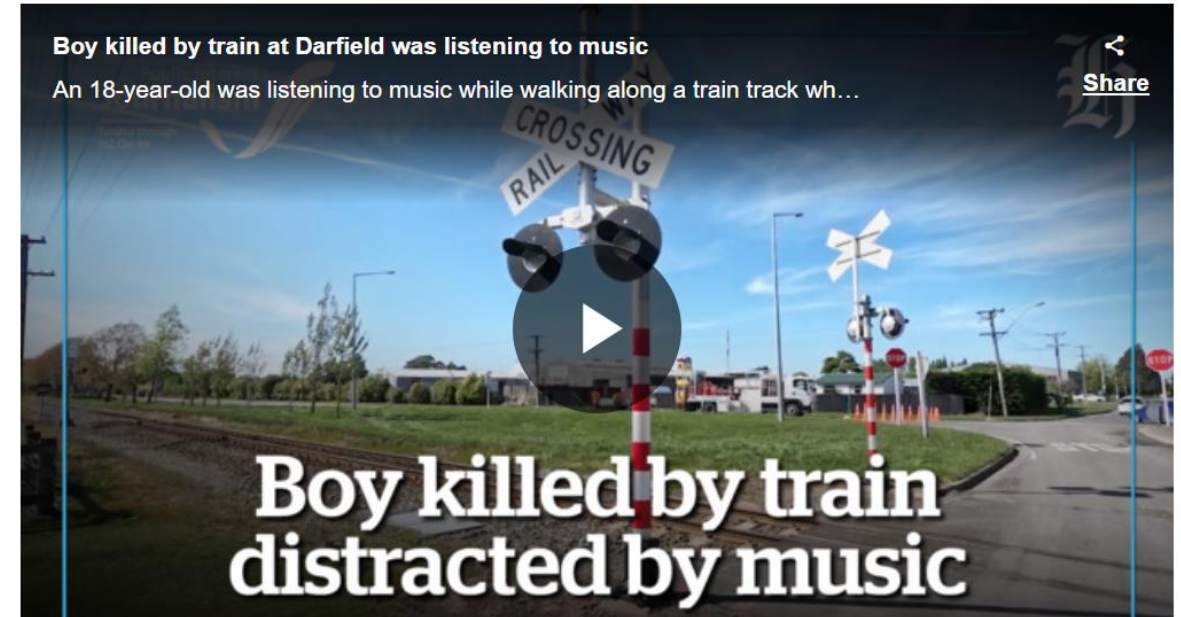
NEWS NATIONAL

Sam Sherwood and Kurt Bayer, Thu, 19 Oct 2023, 1:51pm

Boy killed by train at Darfield was listening to music

An 18-year-old was listening to music while walking along a train track wh...

Share



# Crossing tracks not at a level crossing

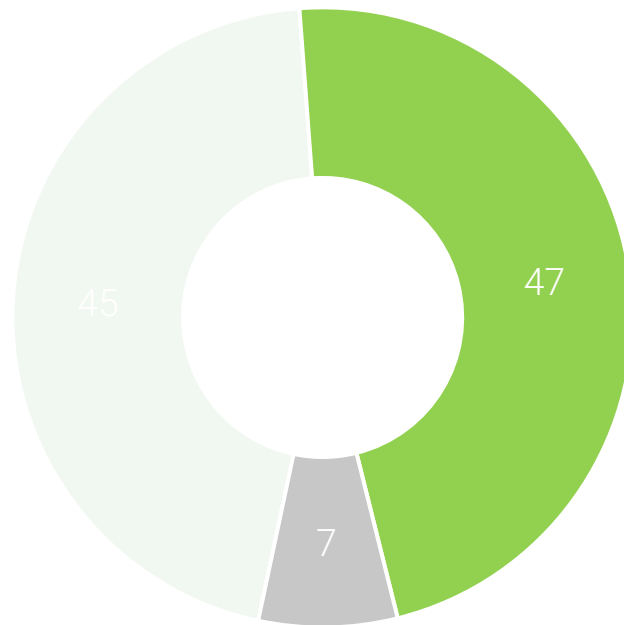
Nearly half of respondents (45%) report having walked on or across railway tracks away from a designated level crossing, suggesting this is a relatively common unsafe behaviour.



These next questions are about when people are walking near or walking across the railway tracks.

As you may be aware a “level crossing” is an intersection where a railway line crosses a road or a path. They will have signs to look for trains and sometimes flashing lights and bells or automatic gates that close when trains cross.

**Have you ever walked on or across railway tracks but NOT at a level crossing? (%)**



■ Yes ■ No ■ Unsure

More likely to have walked on or across railway tracks but not at a level crossing:

Males (52%) compared to females (39%)

Those not living in Auckland, Wellington or Canterbury (50%)


NZ Europeans (50%) and NZ Māori (62%) compared to Asians (23%).

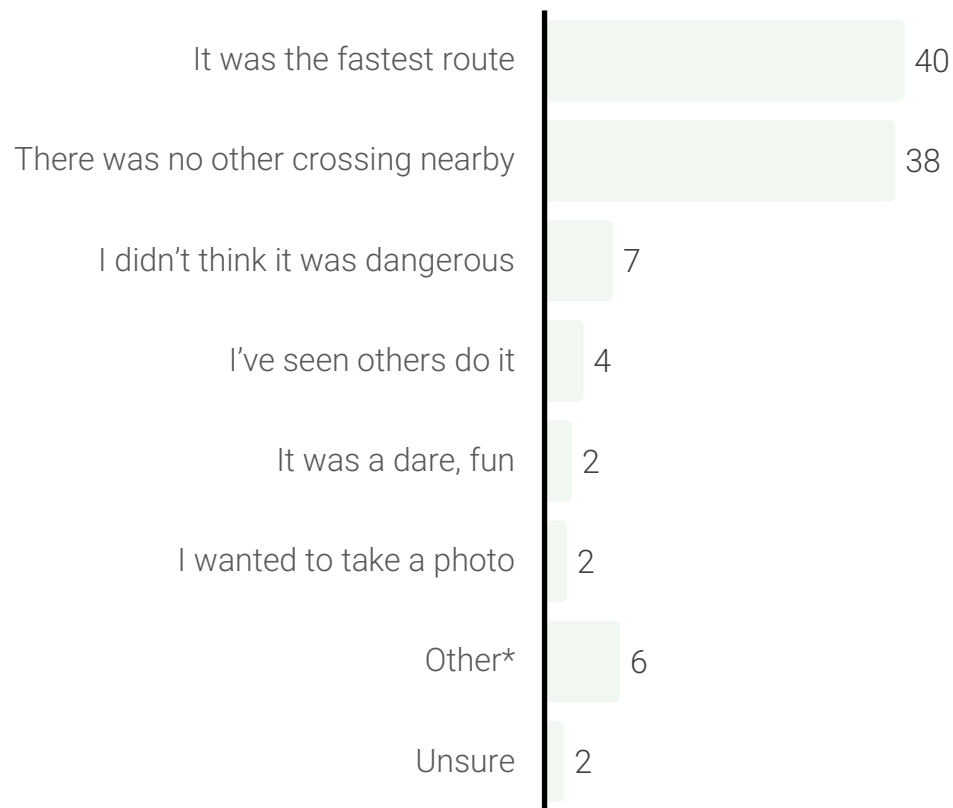
*Base: All (n=1017)*



# Reasons for crossing tracks not at a level crossing

Finding the fastest route and having no level crossing nearby were the main reasons given for crossing tracks outside of a level crossing.

 [Asked of those who have crossed tracks outside of a level crossing] What was the main reason you chose to walk on or across the tracks that way? (%)



## \*Other reasons included:

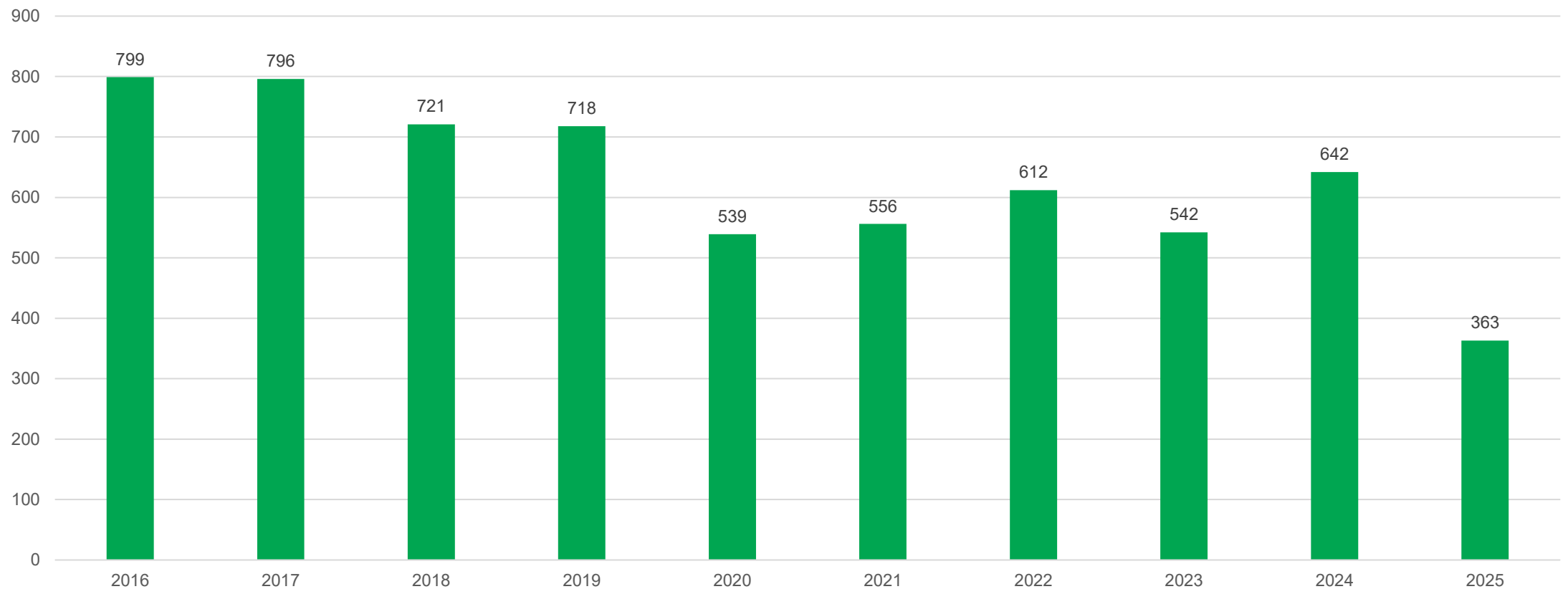
- **Normal in childhood or youth**, many did it without thinking, especially in rural or quiet areas.
- **Part of work or under supervision**, sometimes required by the job.
- **Special situations**, like emergencies, big events, or using farm crossings.

Those 60+ were less likely to cross the tracks as it was the fastest route (25%) while they were more likely to cross the tracks as there was no other crossing nearby (54%).

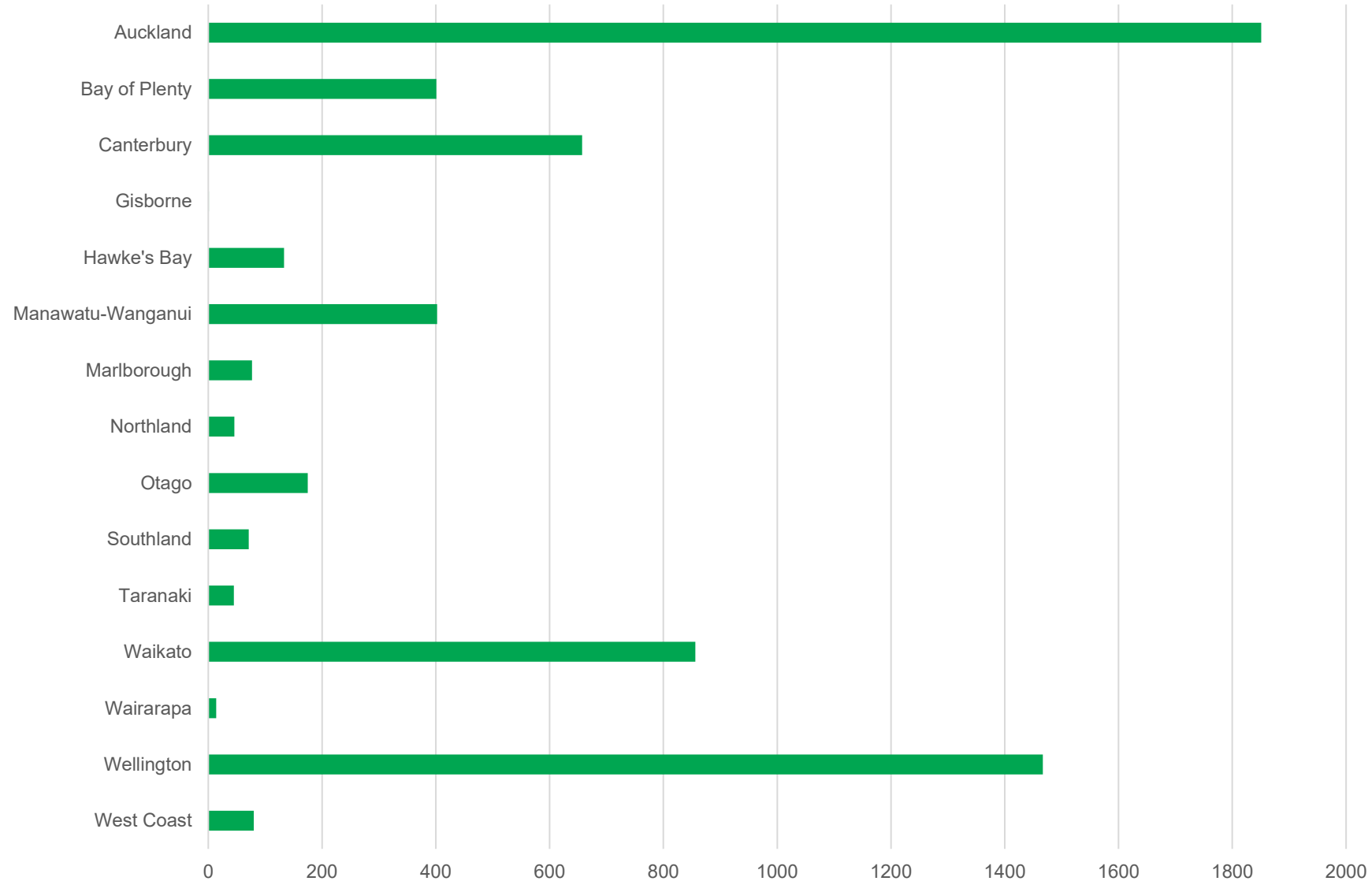
Base: Asked of those who have crossed tracks outside of a level crossing (n=466)

# KiwiRail data

Trespasser breakdown by calendar year from 2016 to-date

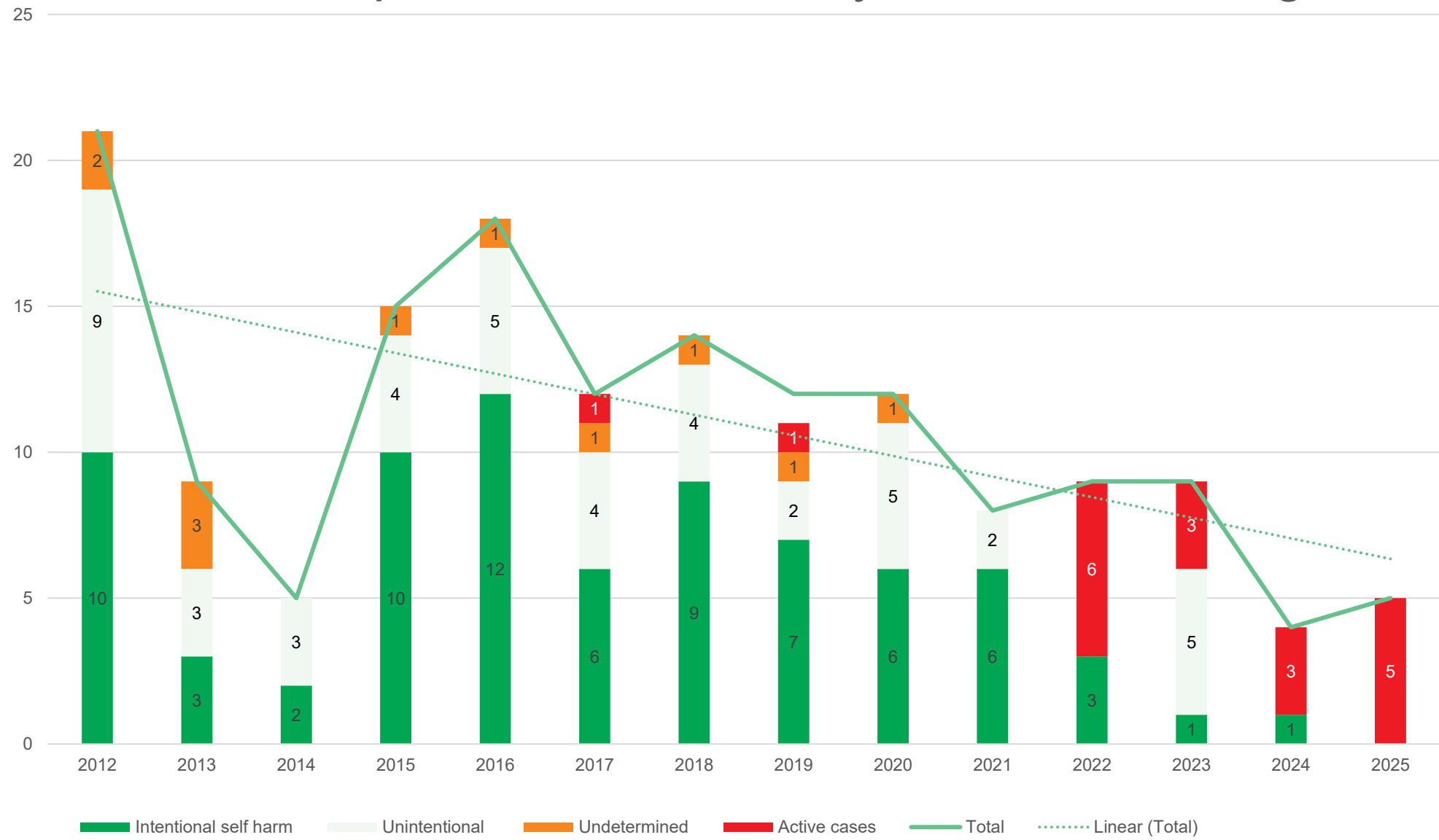


# Trespasser breakdown by region





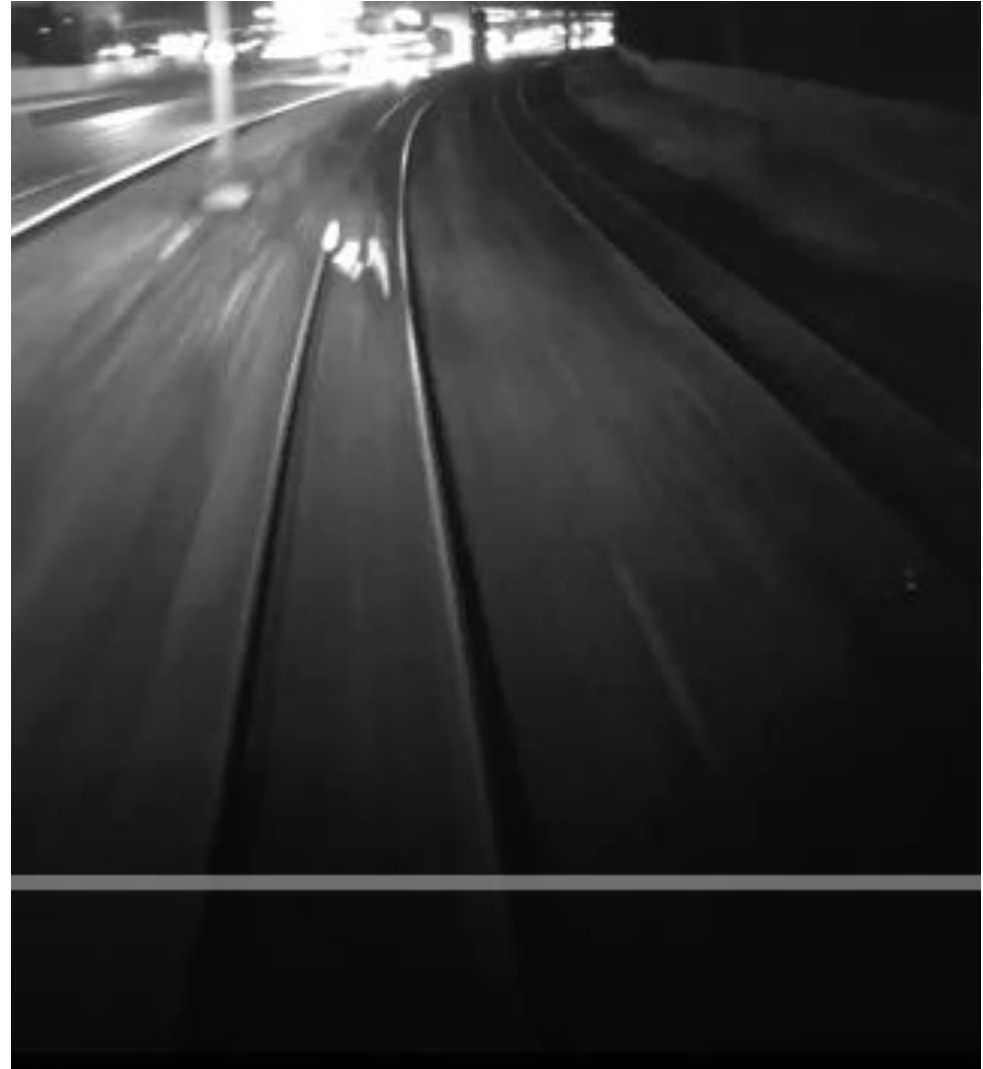
# Rail-related pedestrian deaths by Coroners' findings



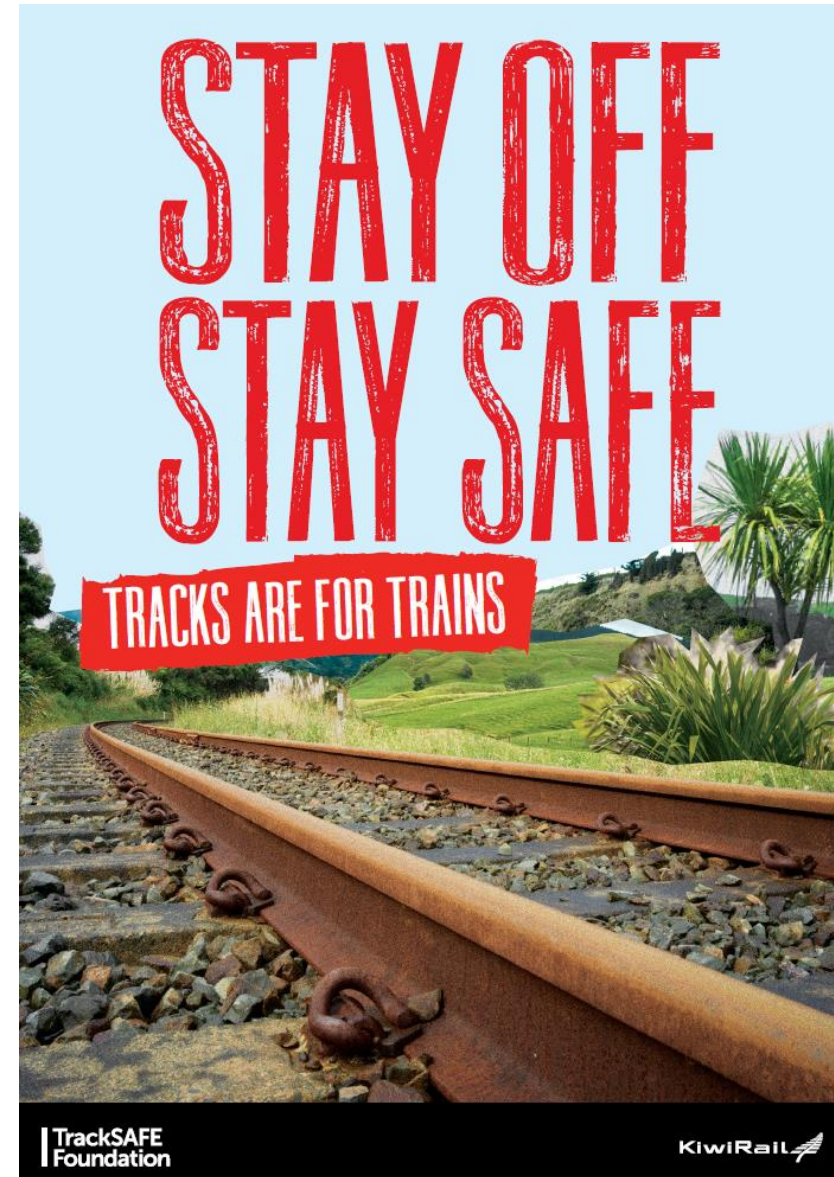
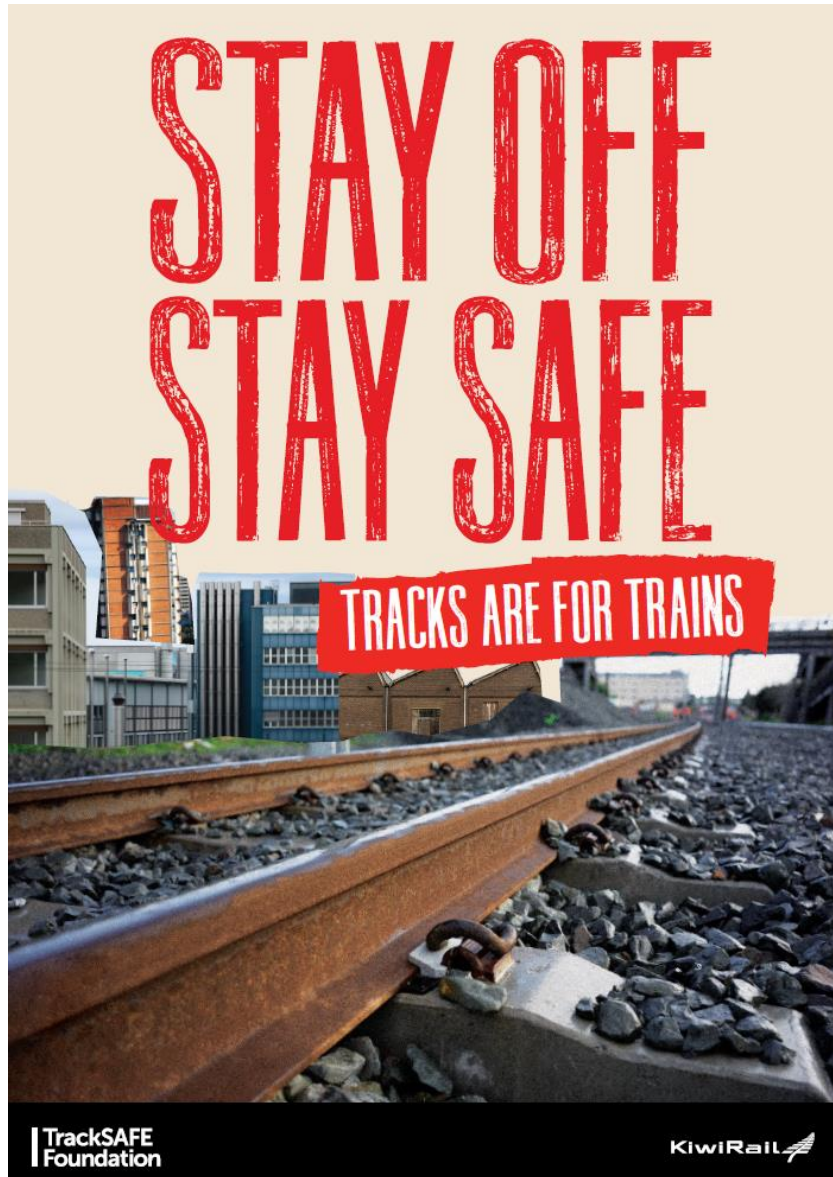
# Objective of Rail Safety Week campaign

- To educate the public that walking on or near railway tracks is both highly unsafe and illegal.
- To encourage people to only cross railway tracks at level crossings.

**Rail  
Safety  
Week**



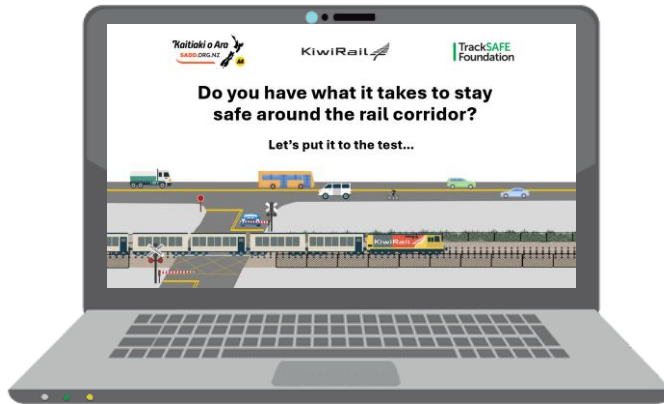
## Artwork



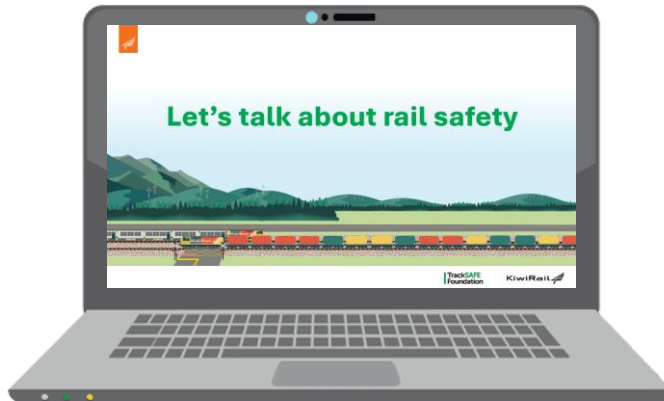


# New resources for secondary school students

'Pick your pathway'  
Interactive rail safety game

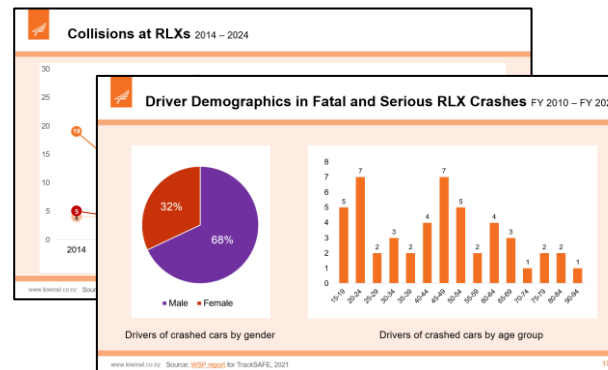


Rail safety presentation  
for secondary students



- New resources for secondary schools have been developed in collaboration with TrackSAFE and Kaitiaki o Ara/Students Against Dangerous Driving (SADD).
- Resources can be found on the [Community Rail Safety](#) SharePoint page (internal) and SADD's [rail safety](#) page (external).

Railway Level Crossings  
Stats & Facts



Ideas for incorporating rail safety into SADD activities

**Believe it or not**

**How to run 'Believe it or not':**

- Write a list of questions with only two answers.
- Choose a question.
- Engage the class.
- Last person to answer correctly wins.

**Example Questions**

Q: The maximum fine for trespassing on the rail

**What's next?**

**How to run 'What's next?':**

- Print out a photo related to driving around railway crossings.
- Display it with the following questions:
  - What do you see?
  - What do you think is happening?
  - What might happen next?
- Have students write their answers on post-it notes and stick them under each question.

**Tip:**

- Make sure students aren't too shy to participate.

**Aim:**

To make students think about the implications and consequences of their choices.

**Tips:**

This works best in a classroom situation or with lots of people.

**Example Photos**

[Link to SADD YouTube video](#) [Link to activity online](#)

# Community Rail Safety Awards

- These new awards were created to recognise secondary school students' efforts to promote rail safety in their schools and wider communities.
- Applications are open for all year 9-13 students. Send your application to [contactus@kiwirail.co.nz](mailto:contactus@kiwirail.co.nz) between **15 August – 30 September**.
- There are five awards available:
  - SADD student conference tickets + \$150 Prezzy card for 3 x year 9-12 students.
  - \$500 Prezzy card for 2 x year 13 students.
- All information needed can be found on the [Community Rail Safety](#) SharePoint page or SADD's [Rail Safety](#) page.
  - A guide to getting started.
  - Rail safety resources (see previous slide).
  - Application criteria and instructions.



# TrackSAFE Foundation

## TrackSAFE NZ

**Phone:** +64 4 498 2010 **Email:** [tracksafe@tracksafe.co.nz](mailto:tracksafe@tracksafe.co.nz) **Web:** [www.tracksafe.co.nz](http://www.tracksafe.co.nz)

**Address:** Level 4, Wellington Railway Station, Bunny Street, Wellington 6011

**Postal Address:** PO Box 593 Wellington 6140, New Zealand



# Q & A

Are there any questions in the Q & A?

# Closing Karakia

*Kia whakairia te tapu*

*Kia wātea ai te ara*

*Kia turuki whakataha ai*

*Kia turuki whakataha ai*

*Haumi ē, hui ē tāiki ē*

*Restrictions are moved aside so pathways are clear  
to return to everyday activities.*

# Links

<https://education.nzta.govt.nz/>

<https://education.nzta.govt.nz/teacher-resources/education-portal-newsletter/>

<https://education.nzta.govt.nz/teacher-resources/>

<https://education.nzta.govt.nz/te-reo-maori-resources/>

<https://education.nzta.govt.nz/coordinator-resources/>